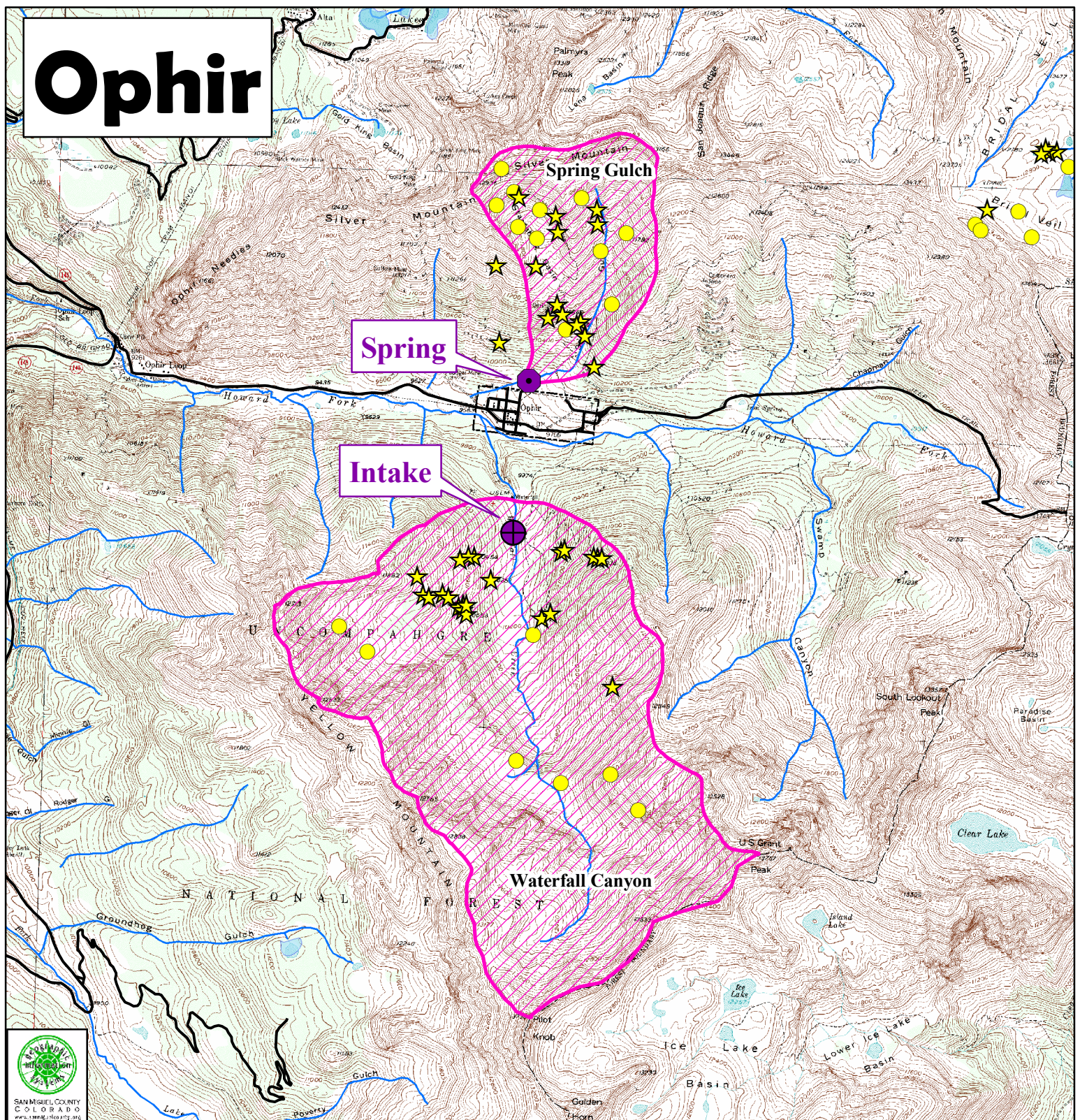


Ophir



Data Sources:

USGS, EPA - Region VIII, University of Colorado, San Miguel County, Southwest Data Center

This map was originally prepared by the Southwest Data Center in 1998. It was recreated by the San Miguel County GIS Dept in 2005.

[GISPROJECTS/NONCOUNTY/GOVT_AGENCIES/OPHIR/SWPA/20050607_OPHIR_SWPA.mxd]

SWPA Project Partners

San Miguel County, Colorado









Colorado Department of Public Health and Environment

United States Environmental Protection Agency

Southwest Data Center

Source Water Protection Areas (SWPA)

Areas around public water supplies (surface or groundwater) over or through which contaminants can travel and affect the water supply.

- | | | | |
|---|--------------------------------|---|---------------|
|  | Source Water Protection Area |  | Intake |
|  | Mine adit |  | Spring |
|  | Potential Contamination Source |  | Well |
|  | Roads |  | Major Streams |